

LEGEND

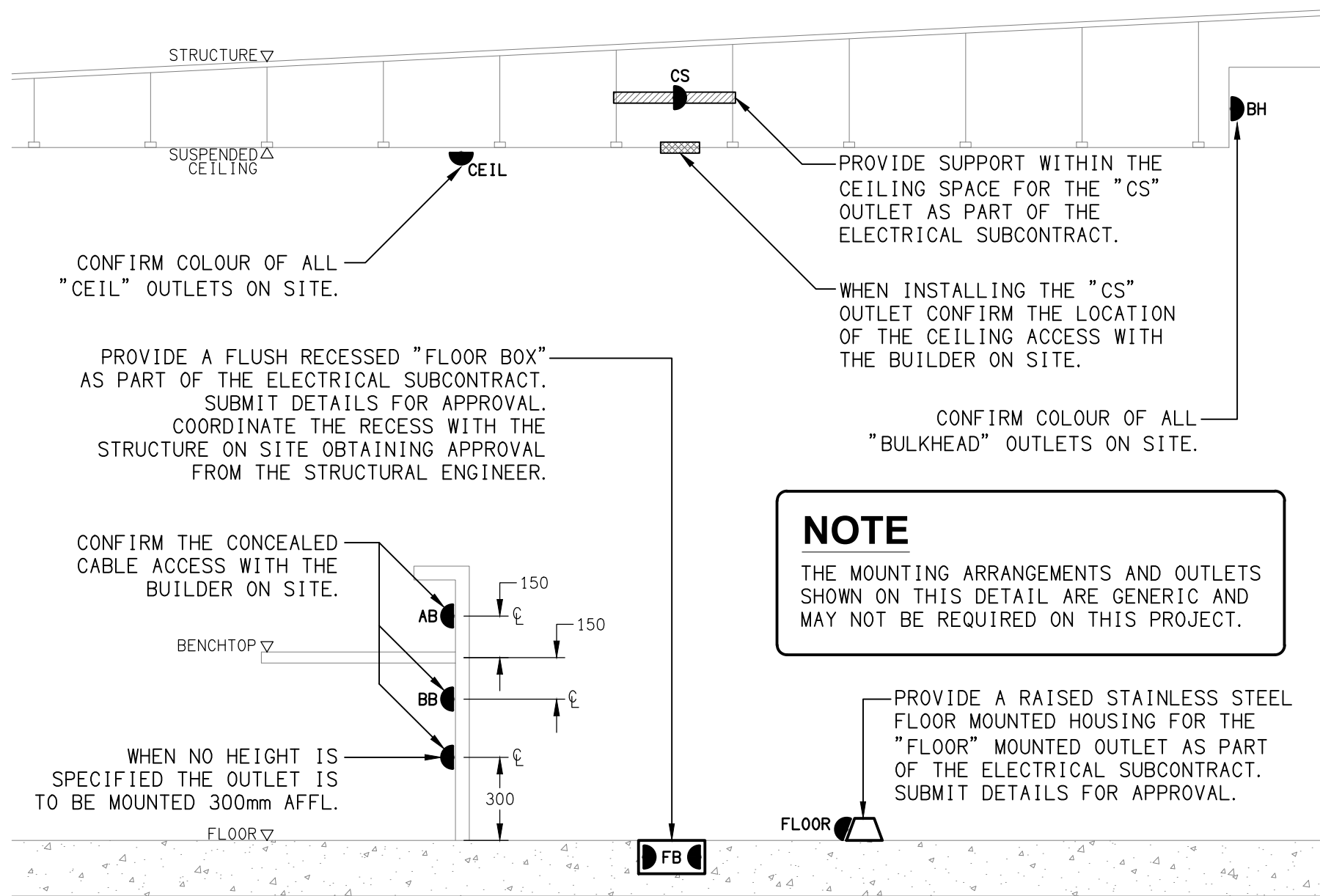
	ELECTRICAL SERVICES SWITCHBOARD.
	SWITCHBOARD / CONTROL PANEL NOT PROVIDED AS PART OF THE ELECTRICAL SUBCONTRACT.
	SINGLE POWER OUTLET.
	DOUBLE POWER OUTLET.
	SPECIAL PURPOSE POWER OUTLET.
	SINGLE PHASE ISOLATOR.
	THREE PHASE ISOLATOR.
	SIGNAGE OUTLET / CONNECTION.
	JUNCTION BOX.
	CONDUIT ROUTE.
	ELECTRICAL PIT, TYPE AS NOTED.
	LIGHTING CONTROL SWITCH PANEL, TYPE AS NOTED.
	ONE-WAY LIGHT SWITCH.
	TWO-WAY LIGHT SWITCH.
	DALI POT DIMMER SWITCH.
	CIRCUIT LINE.
	SWITCH LINE.
	POWER CIRCUIT DESIGNATION. DENOTES DB AND CIRCUIT.
	LIGHTING CONTROL CHANNEL REFERENCE.
	ELECTRICAL EQUIPMENT AS NOTED.
	MATV BELLING-LEA OUTLET.
	RJ45 COMMUNICATIONS OUTLET TO CR-B.
	SECURITY KEY PANEL.
	SECURITY DIRECTIONAL MOTION DETECTOR.
	SECURITY SIREN STROBE.
	SECURITY PIEZO SIREN.
	PA MULTI-TAP CONE SPEAKER.
	FUSE.
	SINGLE PHASE.
	THREE PHASE.
	CURRENT TRANSFORMER C/W REMOVABLE LINK.
	FUSE LINK.
	CIRCUIT BREAKER.
	ISOLATOR.
	QECM V4 CT METER.
	QECM V4 WHOLE CURRENT METER.
	MANUAL DALI POT DIMMER / SWITCH.
	MANUAL TRAILING EDGE POT DIMMER.

LEGEND

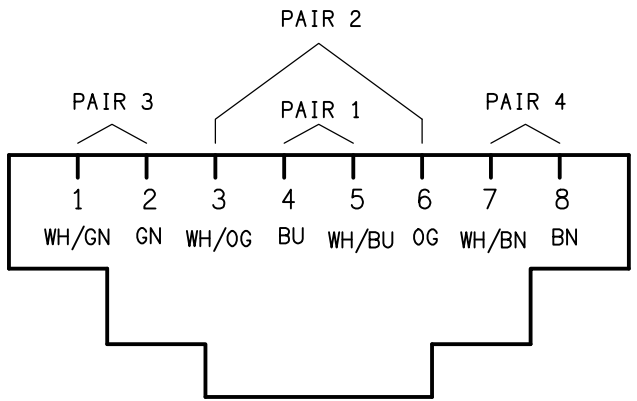
	REFER TO DETAIL NOTED FOR THE AREA SHOWN HATCHED. ADDITIONAL OUTLETS & FITTINGS MAY BE SHOWN ON DETAIL.
	E1: GENERAL LED EMERGENCY LIGHT.
	E2: EXISTING EMERGENCY LIGHT TO BE REMOVED.
	EX: EMERGENCY LED EXIT LIGHT.
	FE: EXISTING CEILING FAN.
	WL01: WALL LIGHT.
	RD01: TE DIMMABLE RECESSED DOWNLIGHT.
	RD02: EXTERNAL RECESSED DOWNLIGHT.
	RD03: RECESSED DOWNLIGHT TO MATCH THE EXISTING ADJACENT RDE FITTING.
	RD04: DALI DIMMABLE RECESSED DOWNLIGHT.
	RDE: EXISTING RECESSED DOWNLIGHT.
	SLE: EXISTING SURFACE MOUNTED FITTING.
	SL01: EXISTING SURFACE MOUNTED FITTING.
	SL03: SURFACE MOUNTED CAN LIGHT.
	CR01: EXISTING COOL ROOM LIGHT FITTING.
	PD10: POOL TABLE LIGHT.
	RT01: EXISTING SURFACE MOUNTED FITTING TO BE REPLACED WITH A 1200 x 300 RECESSED FITTING.
	RT02: NEW 1200 x 300 RECESSED FITTING.
	RT03: NEW 600 x 300 RECESSED FITTING.

NOTE

ALL ELECTRICAL PENETRATIONS THROUGH THE ROOF SHEETING ARE TO BE IN LINE WITH THE STRUCTURAL OR MECHANICAL SERVICES PENETRATIONS TO AVOID DEDICATED FLASHINGS FOR THE ELECTRICAL SERVICES.



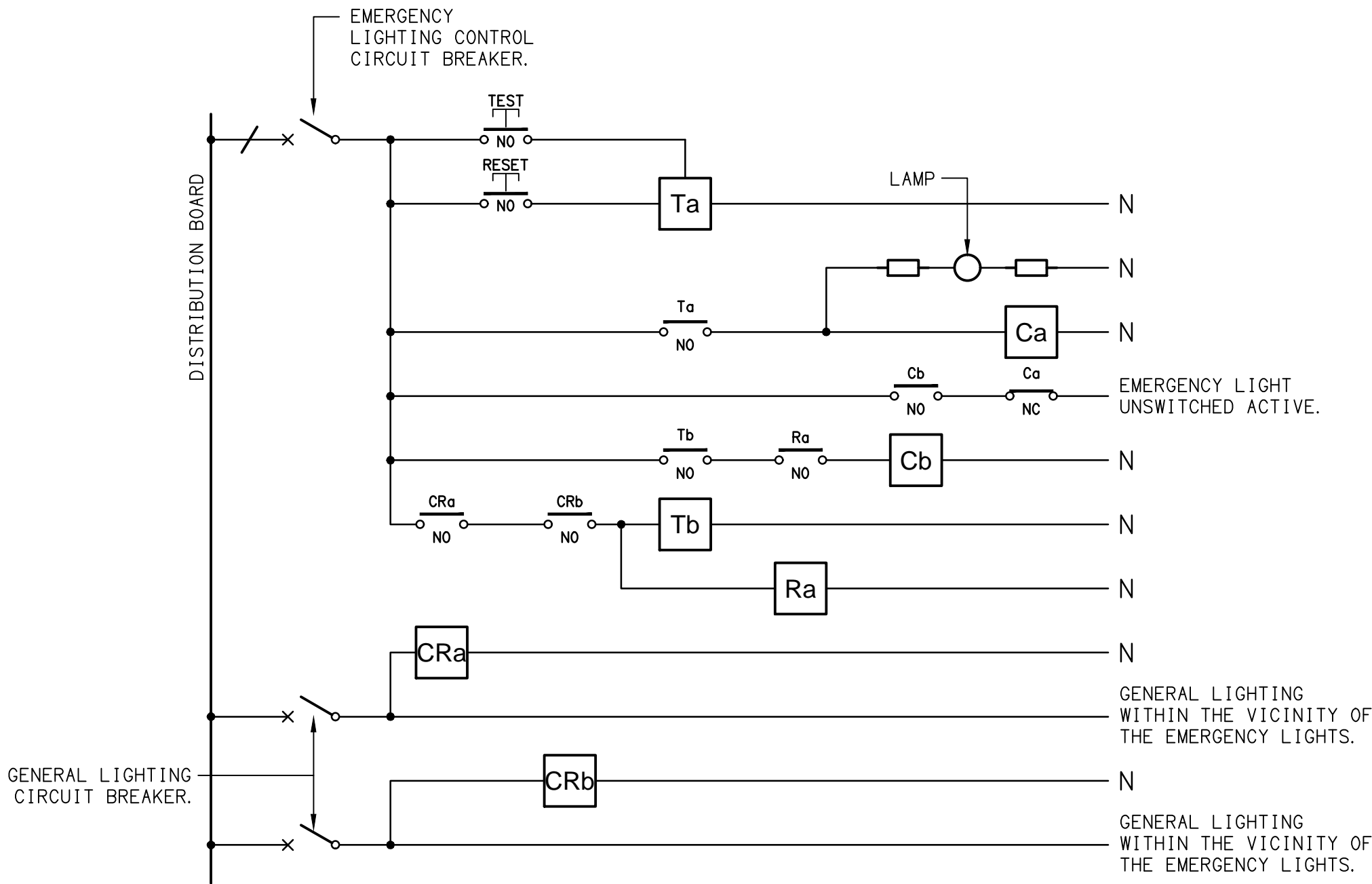
DETAIL
TYPICAL OUTLET MOUNTINGS
NOT TO SCALE



SCHEMATIC
RJ45 PINOUT CONFIGURATION
NOT TO SCALE

EQUIPMENT:

- TEST - TEST PUSH BUTTON MOUNTED ON THE DISTRIBUTION BOARD ESCUTCHEON.
RESET - RESET PUSH BUTTON MOUNTED ON THE DISTRIBUTION BOARD ESCUTCHEON.
LAMP - AMBER TEST INDICATING LAMP MOUNTED ON THE DISTRIBUTION BOARD ESCUTCHEON.
Ta - ADJUSTABLE 0-3 HOUR TIMED RELAY.
Tb - 15 MINUTE RUN-ON TIMER TO OPERATE UPON THE RETURN OF MAINS POWER.
Cx - CONTACTOR x.
CRx - CONTROL RELAY x.
Rx - RELAY x.



NOTES

1. THE EMERGENCY LIGHT UNSWITCHED ACTIVE / GENERAL LIGHTING SWITCHED ACTIVE CIRCUIT ARRANGEMENT AND CONTROL IS TYPICAL FOR ALL CIRCUITS SUPPLYING EMERGENCY LIGHTS.
2. PROVIDE ADDITIONAL CONTROL RELAYS (CRx) CONFIGURED AS PER CRa AND CRb FOR ALL ADDITIONAL LIGHTING CIRCUITS THAT SUPPLY LIGHTS IN THE VICINITY OF THE EMERGENCY LIGHTS.

SCHEMATIC
EMERGENCY LIGHTING
NOT TO SCALE